



# SPRUNG FESTIVAL

capture ● ● ●  
the moment



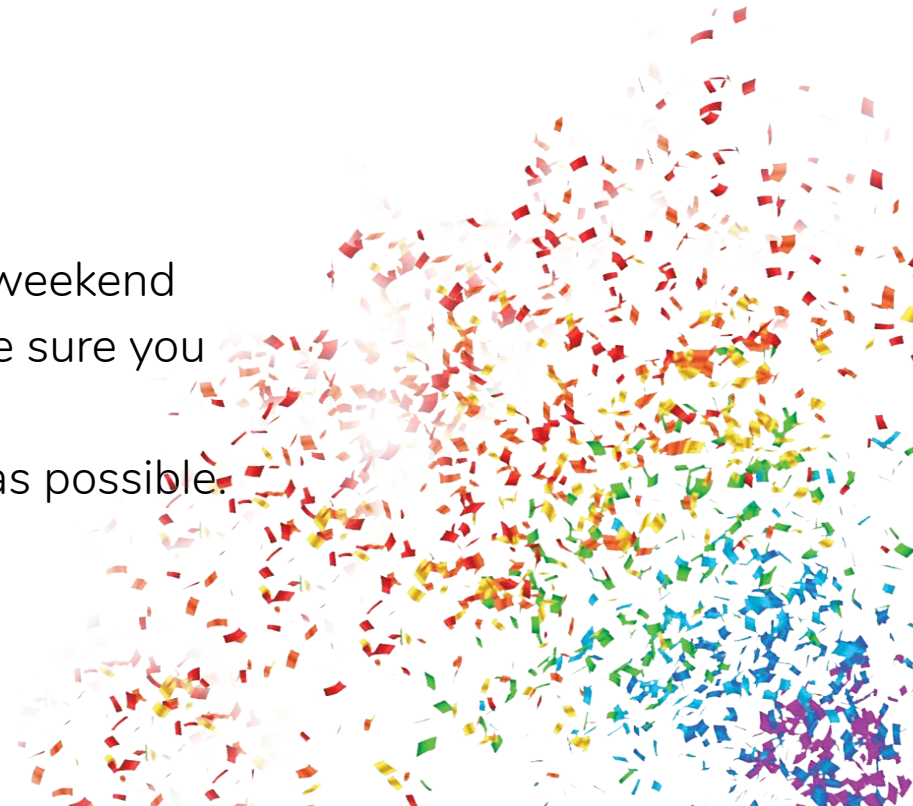
# What is Sprung?

- Theatre, Arts, Interactivity, Music, Lights, Wine and More
- When? 25 September - 5 October
- Where? Ponton Theatre and Communications Hub



# How does it work?

- Auditions and Interviews 19-20 July
- Friday: 12pm - 8pm
- Saturday: 9:30am - 5pm
- Follow our fb for details and updates
- Read schedule carefully and plan your weekend
- Before you leave for the final time, make sure you hand in your Sprung Preference Sheet
- Audition/Interview for as many shows as possible.  
Great experience!
- Bring a friend!





# SPRUNG FESTIVAL

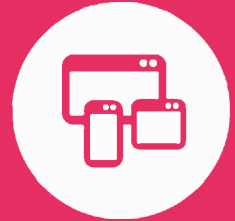


capture ● ● ●  
the moment

Alexandria | Anna | Cassandra

# Who We Are & What We Do

- Sprung Team!
- How we work
- Festival Coordinator
- Public Relations and Marketing Manager
- Festival Designer



# Who We Need

## Assistant Coordinator

This role acts as a support for the Festival Coordinator. The Assistant Coordinator will be instrumental in the running of Front Of House, the Sprung Launch Party, and liaising between various teams.

## Assistant Marketing

This role will have the job of creating social media content for Sprung, posting on the sprung page and other CSU social platforms. The marketing assistant will help out on shoots, take photos and video and learn how to edit them! They will also be used in basic correspondence with local media. This creates the space for a role that has creative control and skill development.

## Assistant Designer

This role acts to assist the Festival Designer. They will communicate and plan with the Designer in order to establish a strong working relationship. They will assist in designing, building and painting set pieces.



Two detailed illustrations of wooden beer mugs, each filled with beer and topped with a thick, white head of foam. The mugs are positioned on either side of the title text. The entire scene is set against a background of horizontal wooden planks, with a rustic metal frame and hanging chains framing the central wooden sign.

# Beyond the Tavern

Caity Cowan, Natesha Ham & Emily Webb

# What is Beyond the Tavern?



- Interactive stage production
- Semi-improvised
- Inspired by the role-playing game, Dungeons and Dragons
- Comedic-adventure





# Cast roles

Dungeon Master  
/ Alex

(M/F)

Rivornel  
Holimion /  
Brianna

(F)

Luth Skytrekker /  
Jackson

(M)

Amber  
Brawnnavil /  
Claire

(F)

Keth / Ben

(M)

# Production Team

Stage Manager

Set Designer

Sound  
Designer/  
Operator

Assistant  
Designer

AV Designer /  
Operator

Lighting  
Designer/  
Operator



forget me not



# meet the team

Artie Hotchkies  
(Co-Writer, Lighting Designer)

Emma Van Veen  
(Co-Writer, Director)

Danni Rayner  
(Stage Manager)

Taylor Dawson  
(Production Manager)



# show overview



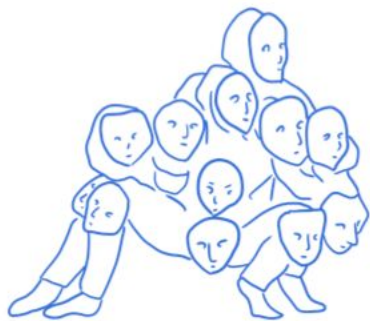
If you had six months to live, you'd make your funeral a ridiculous immersive theatre event that flies in the face of god and propriety, wouldn't you?

Trapped between what she wants and what's actually achievable, this play follows a young artist, Sarah, through her process of arranging her own funeral. Never one to follow the norm, she's taken it upon herself to reimagine it as a theatrical spectacle unlike anything the world has seen before. She's helped along the way by her old university friends, though they don't yet know the full extent of the "production" she's putting on. How much can they take and how they will react when her secret is revealed?

Self-reflective to a fault, Sarah's psyche takes the show to both hilarious and heart wrenching heights as she contemplates how she'll be remembered and what it means to not be forgotten.



# cast roles



sarah

An eccentric and stubborn aspiring young artist, Sarah has big dreams of what her future will be and the mark she will leave on the world. She's self-reliant to a fault and has trouble accepting help from people, especially regarding both her work, and her health, as she is chronically ill.



james / jamie

Their defining characteristic is their loyalty; they're the heart of the group, charismatic and kind, they're always up for a good time and a bit of a laugh, and it takes a lot to get under their skin.



allison / harris

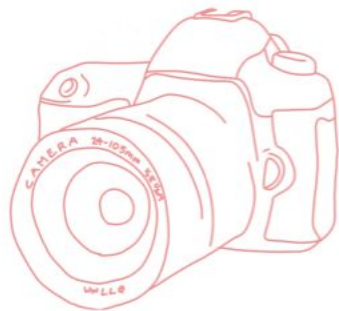
They're opinionated and outspoken, a strong personality that will occasionally give way to a more caring and empathetic side. They're very blunt, and not afraid to call people out on their BS.



tara / chase

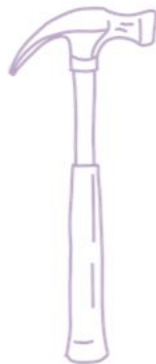
A chronic people-pleaser, they feel the need to help at any given opportunity. Big-hearted, sometimes to their detriment, they'd rather confront problems head on than avoid them.

# production roles



av designer

In charge of AV/Film Design.  
Creates visuals, storyboarding,  
sourcing film equipment,  
shooting of scenes and editing of  
film.



set designer

In charge of Set Design and  
construction. Creates sketches,  
sources materials (if needed)  
experimenting with set  
height/colours/materials and  
construction.



costume designer

In charge of Costume Design and  
Construction. Creates sketches,  
purchases and/or recycled  
materials such as fabrics and  
more to create clothing/designs  
for the characters.



forget me not





# ONE MORNING IN JUNE

Writer and Director: MAX WILSON

Writer and Cast: JULIAN PITT

Production Manager: JOSHUA MEYERS

A stylized graphic of the American flag, featuring a blue field with white stars and a red field with white stars, separated by a white diagonal band. The stars are arranged in a pattern that suggests the flag is waving or flowing.

# Show Overview

One Morning in June is a dramatic character-based thriller set in the White House Situation Room. President Kirkland and his Chief of Staff Jack Brady's friendship is tested by a potential terrorist attack from a foreign power and a General with mysterious motives.

The story is a human tragedy between the President of the United States and his Chief of Staff, their friendship is one of the pillars of the production. The project touches on themes of patriotism, the reality of the American dream and what price is peace, all with a dark satiric edge.



# CHARACTER ROLES



The Chief of Staff and the closest thing the President has to a friend. He is the protagonist and moral centre of the production. A man of good intentions but is willing to sacrifice anything to save his country.

Jack Brady



Joanne Wade is the newly appointed National Security Advisor. She is no-nonsense, selfless and professional in her job.

Joanne Wade



The Chairman of the Joint Chiefs and well-respected member of the military, he/she is a warhawk who truly believes the ends will justify any means.

General  
Maxfield

# PRODUCTION ROLES



## Stage Manager

- Calls the show
- Runs rehearsals
- Sources/creates props
- Prepares show documentation

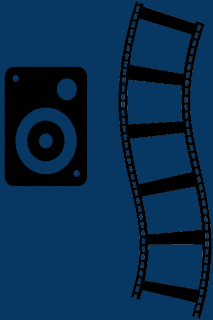
## Set Design/Construction

- Designs, sources and constructs the scenic elements
- Great eye for detail and accuracy



## AV/Sound Design/Operator

- Responsible for filming and recording the audio visual and sound components
- Operates the AV and Sound
- Ideal experience in using a mixing desk and Tricaster



## LX Design/Operator

- Designs and operates the lighting components
- Ideal experience in using a lighting board







# What is Plumberman 2519: The Musical?

Beaming you 500 years into the future, Plumberman 2519: The Musical is a comedic romp which follows the story of an alcoholic, computer loving (quite literally), spacefaring plumber of the future. This space oddity explores the depths of what love and family truly mean alongside how far forgiveness can go. With futuristic set pieces, bright nostalgic design and hilarious original musical numbers (mostly not about plumbing), Plumberman is sure to clear your emotional pipes and help you flush away your problems.

# Performance Roles



## **THE KID (m/f)**

A 16 year old who was left by their parents to live with their aunt and uncle. A real angsty teen.



## **S.H.A.R.O.N (f)**

An AI in a robot body. She is Plumberman's companion and runs the ship with an iron hand.



## **Ensemble (m/f)**

3 needed. A range of roles, human to alien. Perfect for those who want to do a 'prod' role as well, all species accepted.



# Production Roles

## Sound

### Designer/Operator

To collect sound effects and to operate the sound board.



## AV Designer/Operator

To create AV moments and to operate the TVs during the show.

*can be a double role*



## Stage Manager

To create documentation during rehearsal period and to call the show.



## Costume/Hair and Makeup

To design the look of the characters in a world 500 years on.

*can be a double role*







# Industrial Paradise

*Every Style*

*Has a Story*





# What the show is...

The average Australian woman spends up to \$10, 000 on clothes a year. Industrial Paradise is an event that will showcase various items of clothing. This is to show to the general public that it can be cheap keeping up with the current fashion trends. Along with the item of clothing being displayed on models, there will be a booklet with the design process available for viewing.

## **My role in the show is**

Production manager

Director

Costume designer

Set designer

## **The Characters:**

The Lover

The Artist

The Punk

The "Mad Hatter"

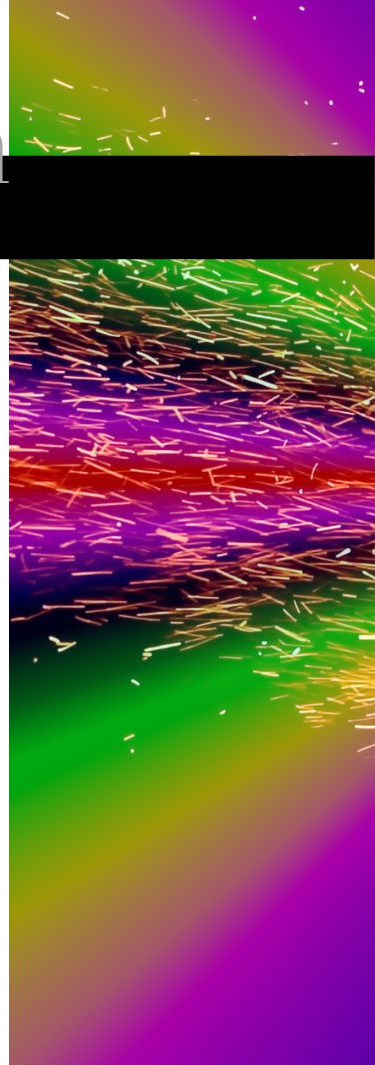
The Teacher

The "Ring Master"

# The Production Team

**Costume maker/lighting designer** – to assist myself as the director and costume designer in the making of items of clothing. They are also required to design the lighting for the event, but not to operate, as they will also be one of the models. Undertaking these two roles into the one will allow the individual to develop a thorough understanding of how closely costume will work with lighting, i.e. how the items will look under lights, how the colours and materials will be affected with certain lighting shades, angles and positioning. The individual who undertakes this role will need to have dedication to design, a creative mind and the ability to work alongside individuals as well as autonomously.

**Stage manager**– the individual who is given the role of stage manager will undertake several responsibilities and tasks such as scheduling and running rehearsals, coordinating the work of the stage crew, calling cues and possible actors entrances during the performance. In this case the Stage manager will also undertake the operation of the lighting and sound desk during the performance. The individual must be a well organised person, can work along side others as well as autonomously. The stage manager will develop the ability to think on their feet, keep calm under pressure, have a high level of attention to detail and budget management skills.







# CLASS 3/4 S

Heather Edmonds, Janda Nichols, Sam Mulligan



# Welcome to Class 3/4S!

Indulge your inner child and join us for class at the Creative Hub as we travel back to a time where the biggest decision of the day was what to get in your lunch order. Sprung Primary School is in session and welcome its new students- you, the audience!



CLASS 3/4S will transform the Creative Hub into a multi-zoned immersive theatre wonderland where the audience is invited to undertake a participatory experience exploring play, creativity, and what it means to make art, through the lens of childhood nostalgia. Part art installation, part exhibition and part theatrical production, CLASS 3/4S will invite you to reacquaint yourself with the joy of play for the sake of play alone. Just make sure you bring a gold coin for the canteen and try not to get sent to detention!

# What our roles are & who we need

## Who we are:

Sam Mulligan - **Production Manager**

Janda Nichols - **Sound Designer, Technical Advisor**

Heather Edmonds - **Director**

## Who we need:

Cast/Set designer

Cast/Assistant Set designer

Cast/ Audio visual/ Lighting

Cast/ Assistant Audio visual/  
Lighting

Cast/ Stage Manager/ Assistant  
Production Manager



# Join the Class!

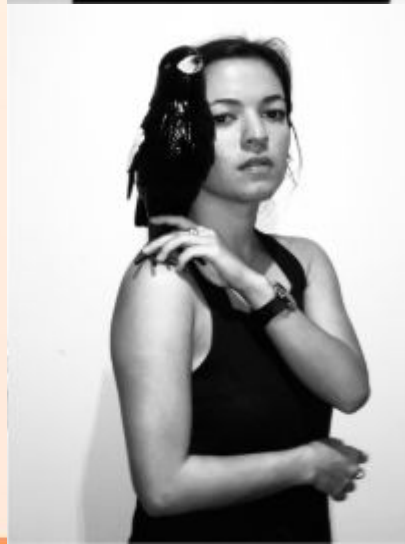
- Dual roles will give company members a unique and well-rounded experience.
- Non traditional rehearsal structure- each week 1x Rehearsal session and 1x Building session, with the whole company at both. Everyone will be involved with everything.
- Why should you join us?
  - Upskill in creating not just a traditional play, but a creative and interactive live event.
  - Successful theatre makers today must be able to improvise and devise to create their own work.
  - Blending practical and creative skills will create a tight-knit company that is multi-skilled.

# THANKS AND SEE YOU SOON

Please make sure you do a group audition AND individual interview for the show.



# GOOD MOURNING





**Good Mourning** is an art installation that displays anonymous and individual experiences with grief.

We've all lost something before; pair of undies? Marbles? Dad?

Presented in the Creative Hub, our audience will delve into a world presenting stories of various scales of grief through spectacle, audiovisual design and soundscape.

“Each piece and experience is completely different, and therefore entirely the same”



After being immersed in the space, the 'theatre-in-the-round' performance begins. It retells Hannah's personal story of how she spent her father's remaining 3 months of life following his diagnosis.

Sounds wanky? Think ABBA dance numbers, trampolining routines, funky projection mapping, dinosaur impersonations and finding out why Hannah thinks every magpie she sees is the spirit of her father.



# Join us

This production is semi-devised, meaning our additional company members will be involved in developing specific parts of the show.

## **Cast** x 3

Three additional cast members who are excellent storytellers and team players to play various roles throughout the show, who love to boogie and love creating comedic characters that can deliver the heart of the story.

## **Crew** x 2

Costume Designer (to be doubled with a cast role)

To design and fabricate costumes for all cast members.

Assistant Set/Technical Designer

To assist Emily with design, implementation and operation of lighting, sound, audiovisual and set concepts.



# Auditions

Friday 3:30pm 4pm 4:30pm

Saturday 3pm 3:30pm 4pm

# Interviews

Friday 5pm - 6pm

Saturday 2-3pm



# What if I can't make auditions?

- Try and make as many as you can!
- Come see Alex after the presentation



# Company Wear!



Tee \$28.60



Hoodie \$48.40